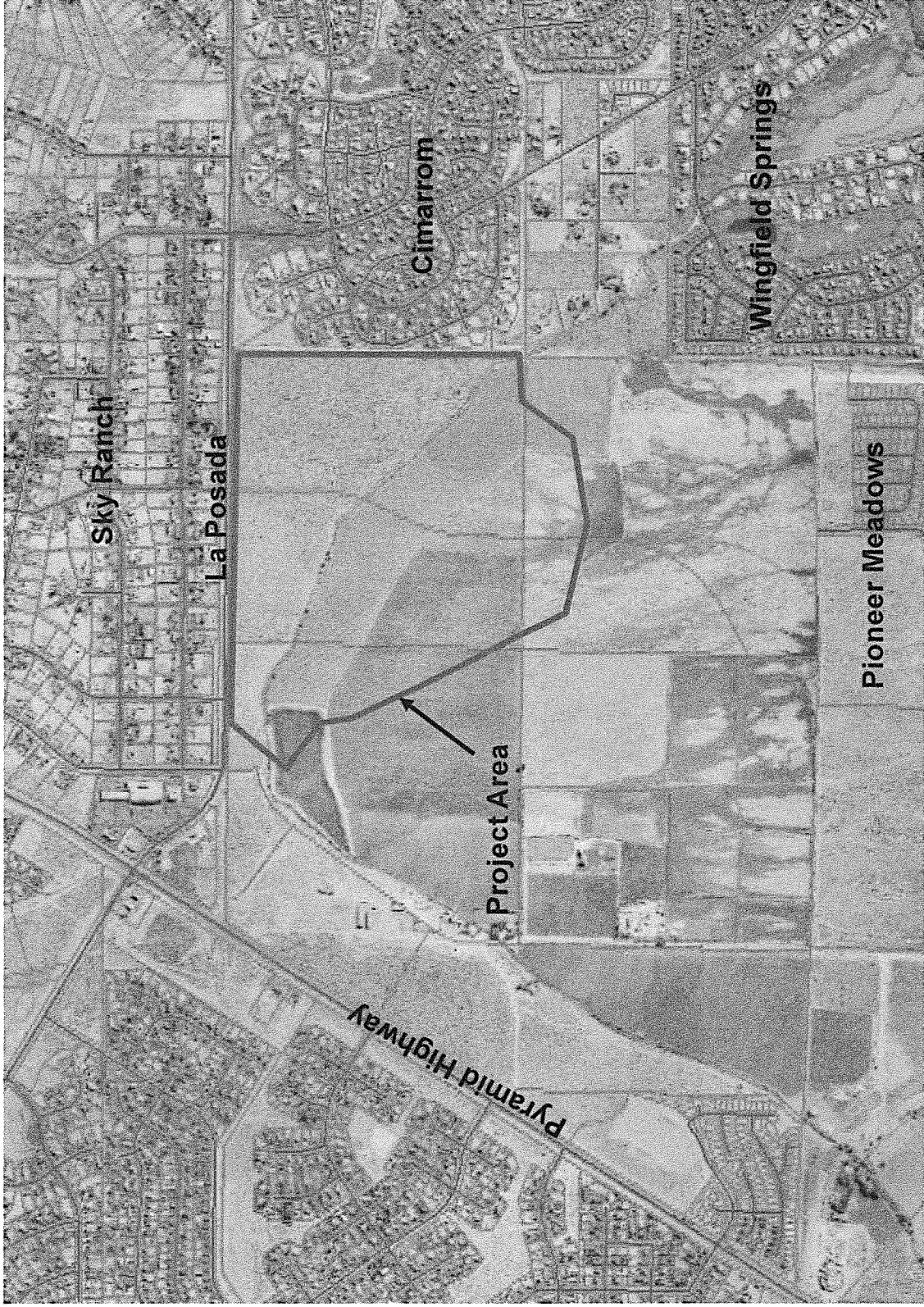


RRW STONEBROOK, LLC

List of Corporate Officers  
June 2013

Jeffrey Dinkin, Managing Director  
Douglas S. Brown, Managing Director  
Eric Fleiss, President

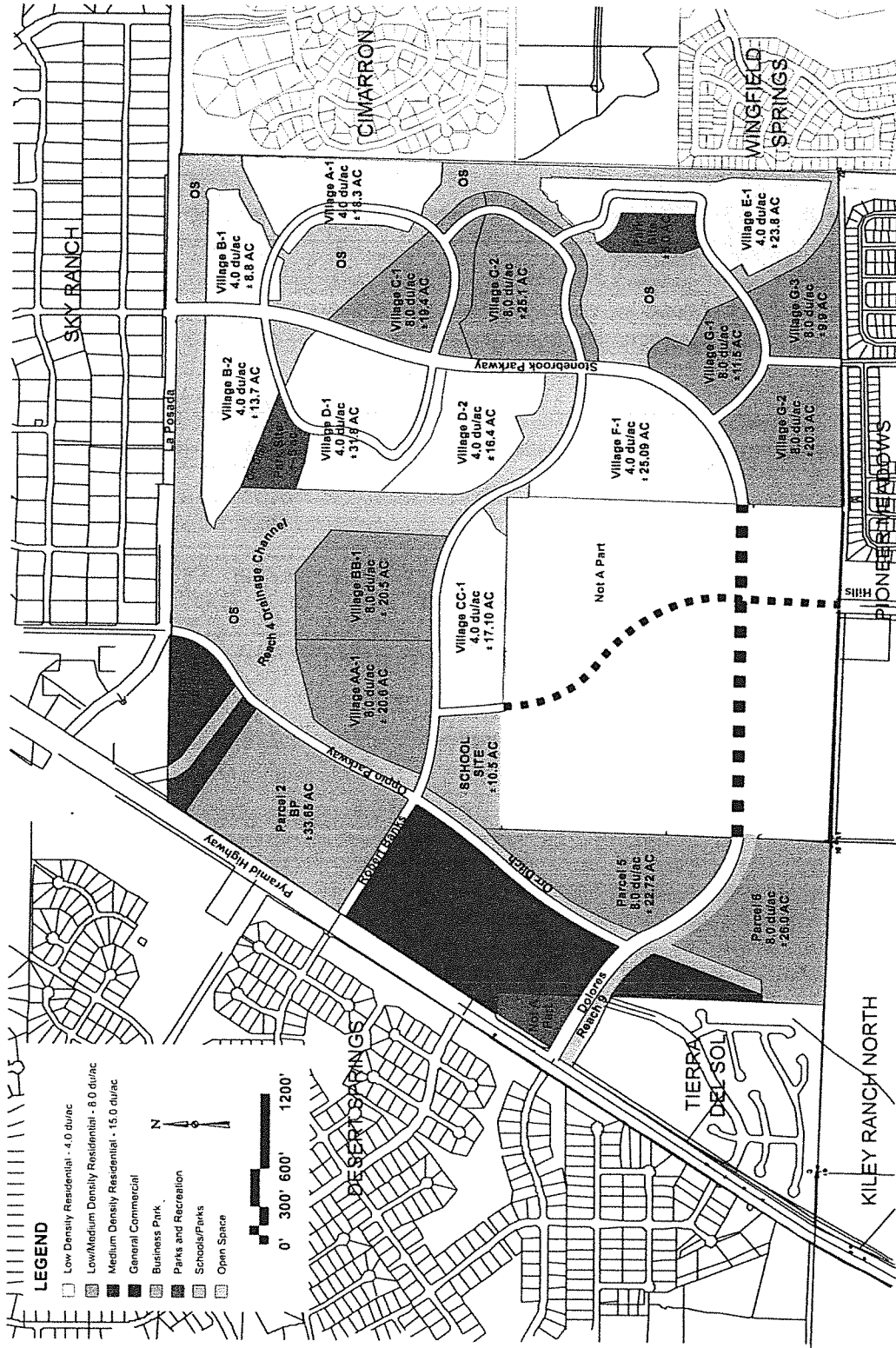


## Stonebrook Phase 1

Vicinity Map



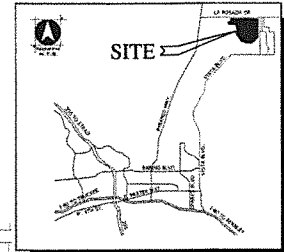
**WOOD RODGERS**  
ENGINEERING · PLANNING · MAPPING · SURVEYING



# STONEBROOK - PHASE 1

## TENTATIVE MAP

### TITLE SHEET



#### VILLAGE INFORMATION:

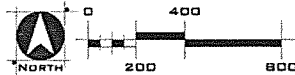
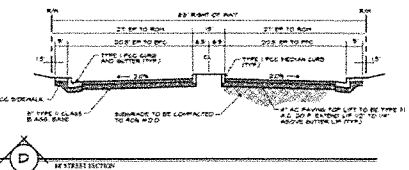
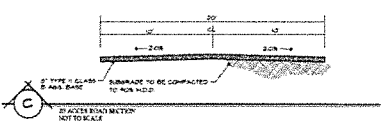
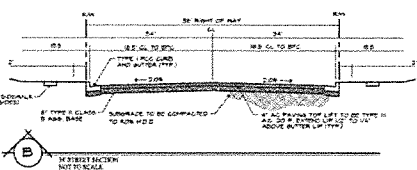
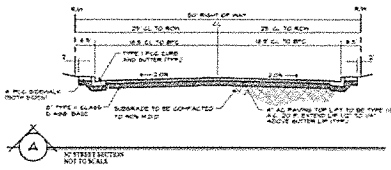
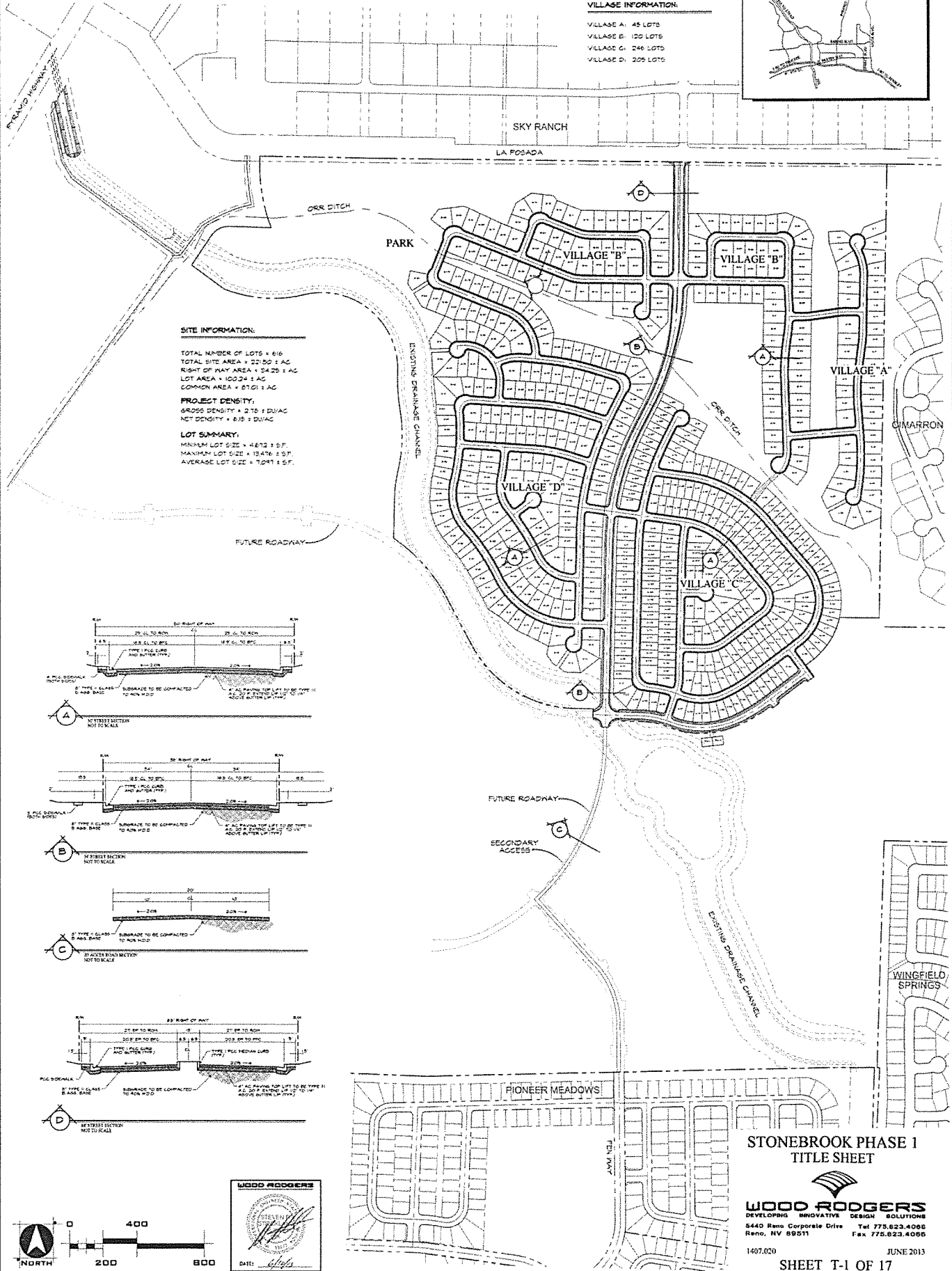
- VILLAGE A: 45 LOTS
- VILLAGE B: 120 LOTS
- VILLAGE C: 246 LOTS
- VILLAGE D: 205 LOTS

#### SITE INFORMATION:

TOTAL NUMBER OF LOTS = 616  
 TOTAL SITE AREA = 22.50 ± AC  
 RIGHT OF WAY AREA = 24.25 ± AC  
 LOT AREA = 100.24 ± AC  
 COMMON AREA = 87.01 ± AC

**PROJECT DENSITY:**  
 GROSS DENSITY = 2.75 ± DU/AC  
 NET DENSITY = 6.15 ± DU/AC

**LOT SUMMARY:**  
 MINIMUM LOT SIZE = 4670 ± S.F.  
 MAXIMUM LOT SIZE = 12476 ± S.F.  
 AVERAGE LOT SIZE = 7041 ± S.F.

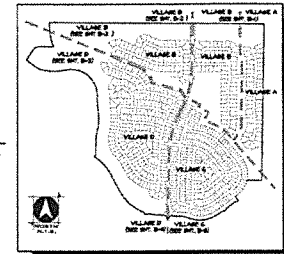


### STONEBROOK PHASE 1 TITLE SHEET

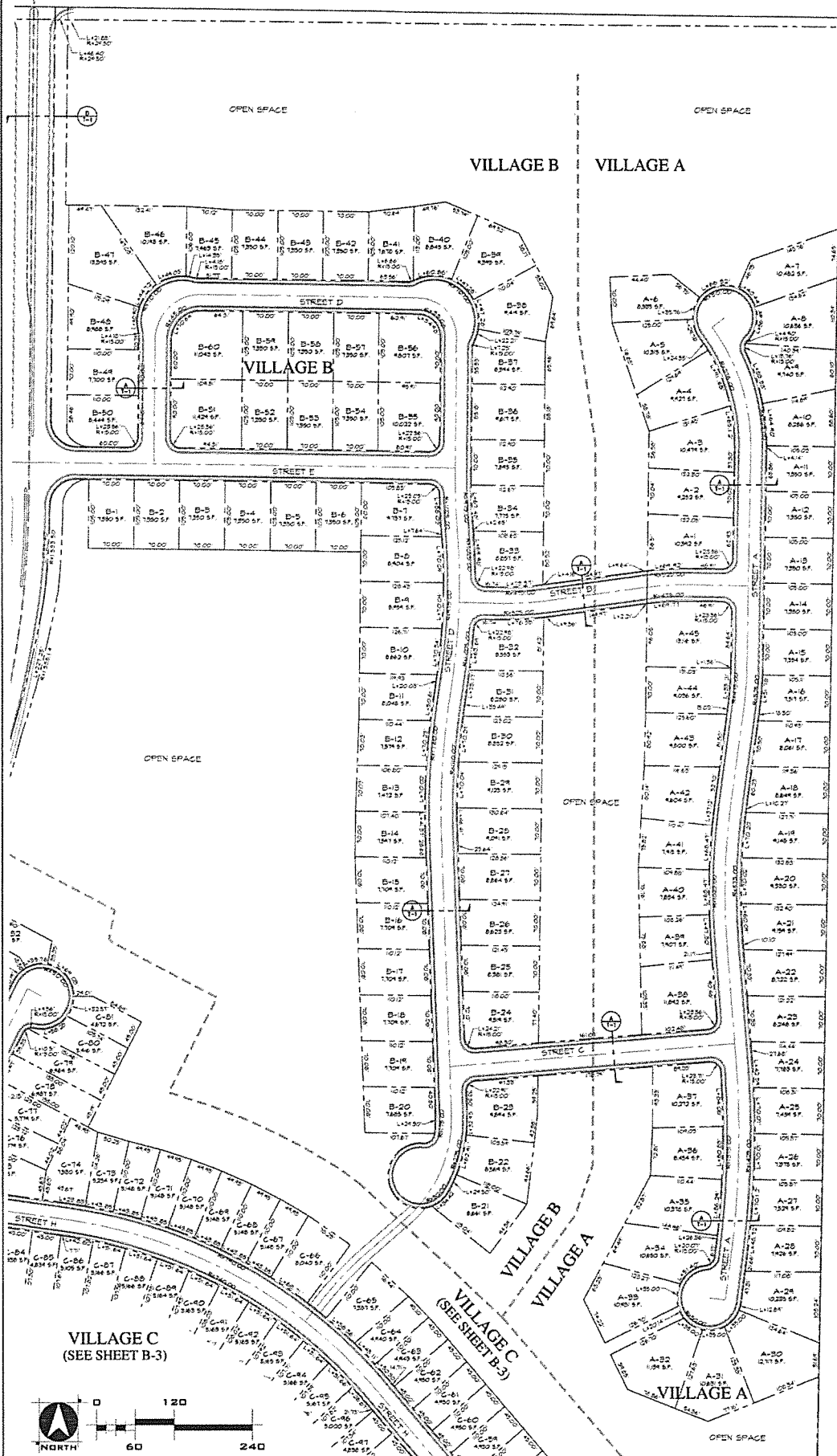
**WOOD RODGERS**  
 DEVELOPING INNOVATIVE DESIGN SOLUTIONS  
 5440 Reno Corporate Drive Reno, NV 89511  
 Tel 775.823.4088 Fax 775.823.4086

# STONEBROOK - PHASE 1

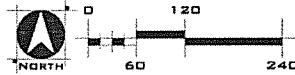
TENTATIVE MAP  
LOT AND BLOCK PLAN



KEY MAP



VILLAGE C  
(SEE SHEET B-3)



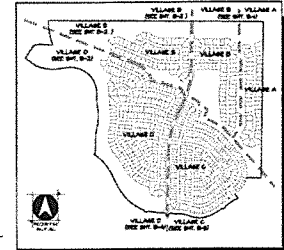
STONEBROOK PHASE 1  
LOT AND BLOCK PLAN

**WOOD ROGERS**  
DEVELOPING INNOVATIVE DESIGN SOLUTIONS  
5440 Reno Corporate Drive Tel 775.823.4008  
Reno, NV 89511 Fax 775.823.4008

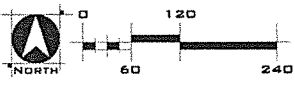
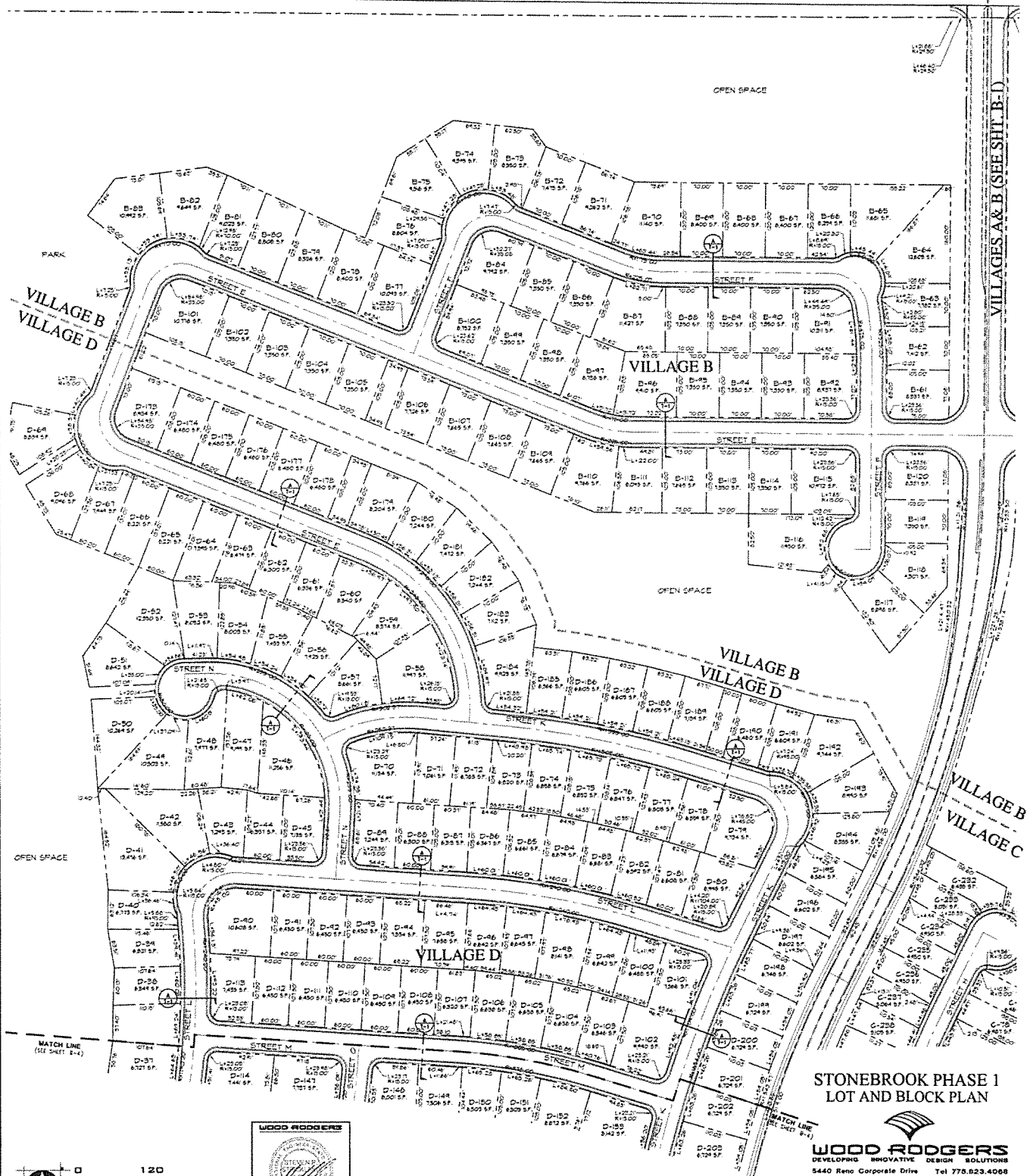
# STONEBROOK - PHASE 1

## TENTATIVE MAP

### LOT AND BLOCK PLAN



KEY MAP



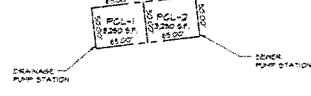
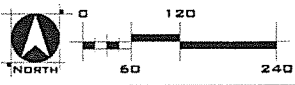
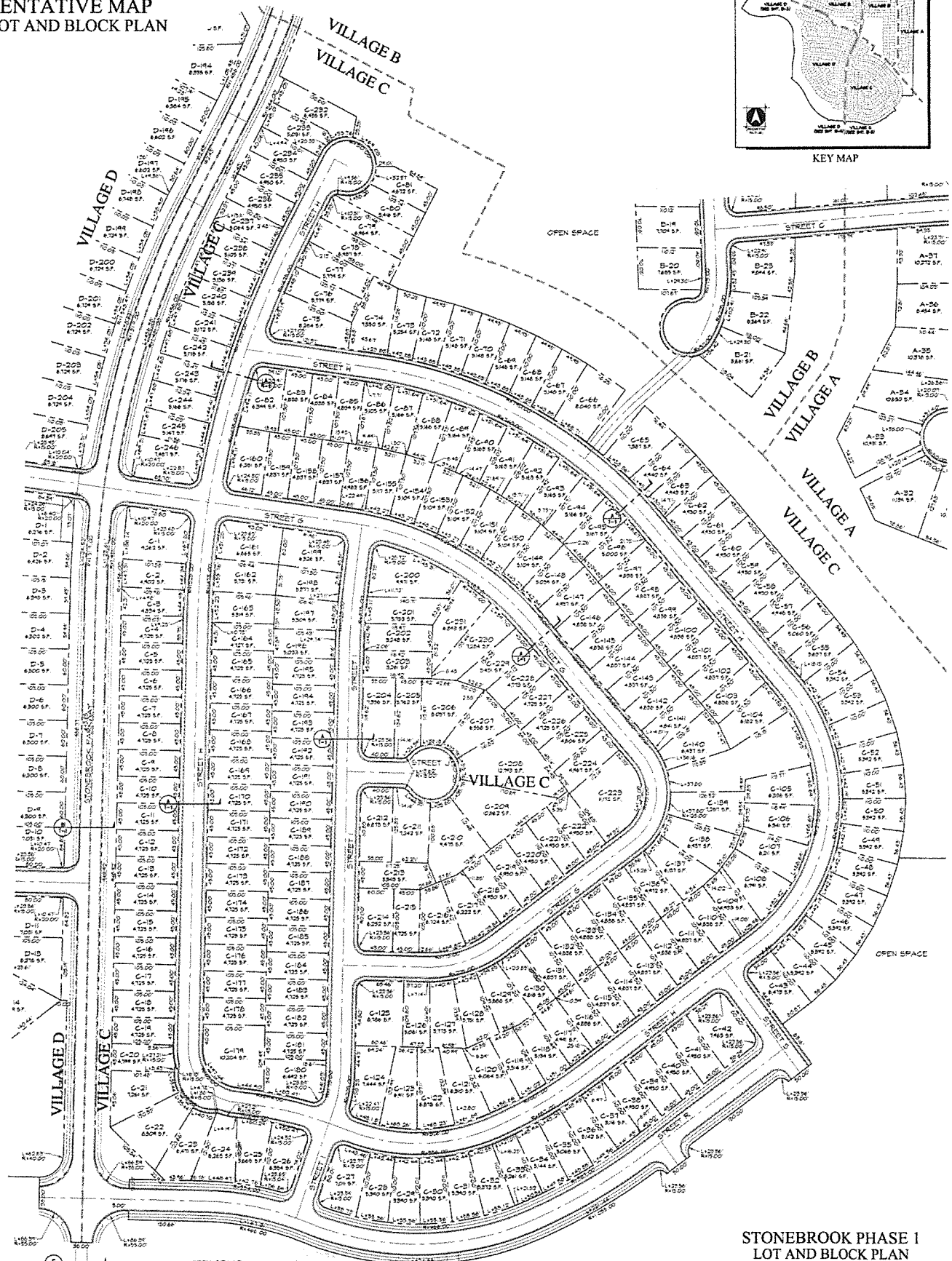
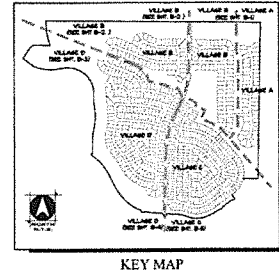
**STONEBROOK PHASE 1**  
**LOT AND BLOCK PLAN**

**WOOD RODGERS**  
 DEVELOPERS INNOVATIVE DESIGN SOLUTIONS  
 6440 Reno Corporate Drive Reno, NV 89511 Tel: 775.823.4068 Fax: 775.823.4068

# STONEBROOK - PHASE 1

## TENTATIVE MAP

### LOT AND BLOCK PLAN



STONEBROOK PHASE 1  
LOT AND BLOCK PLAN



